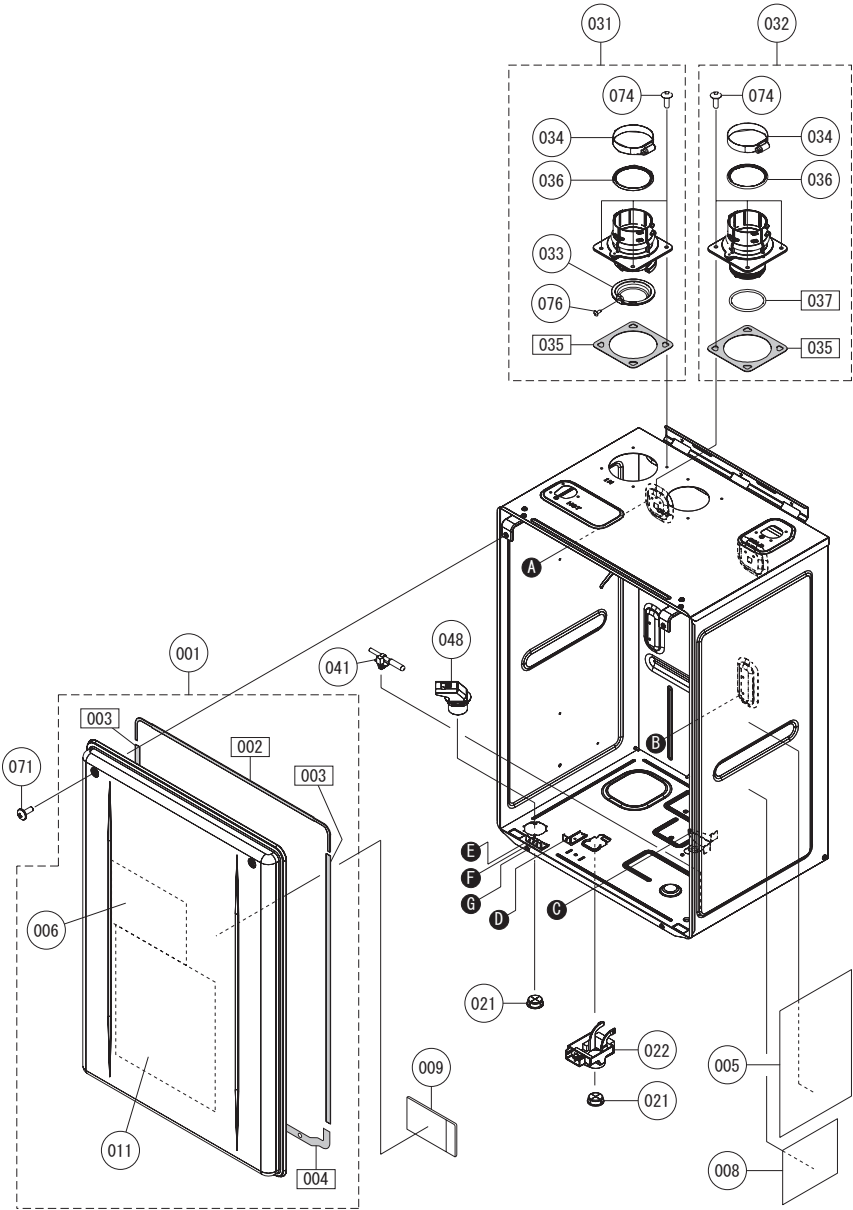


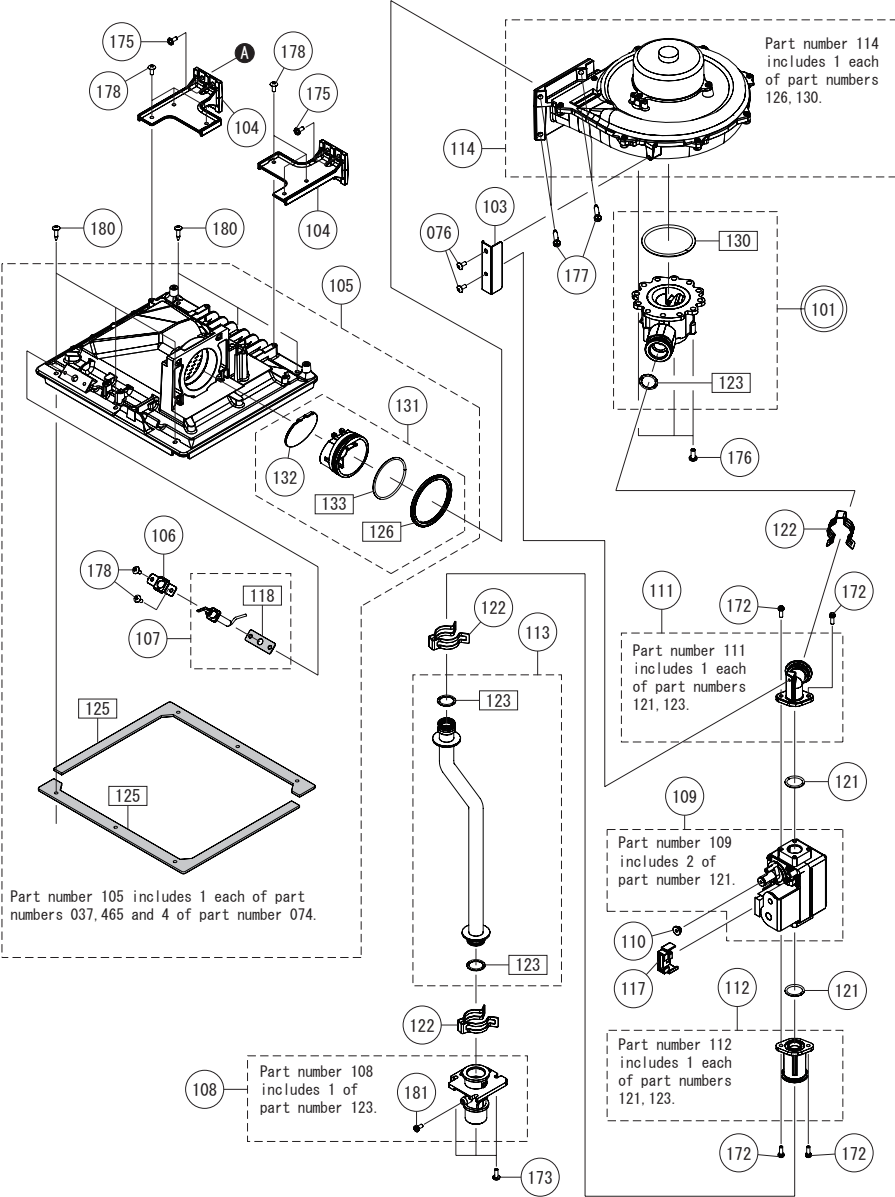
External outfitting EZ111DV (GQ-C3260WX-FF US)
EZ98DV (GQ-C2860WX-FF US)
UT199DV (GQ-C3260WX-FF PB US)



External outfitting EZ111DV (GQ-C3260WX-FF US)
EZ98DV (GQ-C2860WX-FF US)
UT199DV (GQ-C3260WX-FF PB US)

Part Nos	Part Names	Order Nos	Q'ty/unit
001	Front Cover - GQ-C3260WX-FF US	SKJ72NM	1<EZ Series>
002	Front Cover - GQ-C3260WX-FF PB US	SKJ722S	1<UT Series>
003	Gasket - Front Cover Top	FABL011	1
004	Gasket - Front Cover Sides	CVAL004	2
005	Gasket - Front Cover Top and Bottom	AMPL015	1
006	Label - Outside Front Cover Caution Label	ELV0003	1
007	Label - Inside Front Cover Caution Label	EYSK006	1
008	Label - Name Plate DV/OD	FDAK151	1
009	Parts List/Technical sheet	FDAK251	1
011	Wiring Diagram	FDW0002	1
021	Wire Grommet - Rubber	CXPA026	2
022	External Remote Terminal Block	EBTA017	1
031	Intake Flue w/ O-Ring and Gasket (SET)	SKJ71W1	1
032	Exhaust Flue w/ O-Ring and Gasket (SET)	SKJ71W2	1
033	Filter - Intake Air	FABF101	1
034	Clamp - Exhaust Pipe	FABF108	2
035	Gasket - Exhaust Flue	FABL101	2
036	O-Ring - Exhaust Pipe	FABL102	2
037	O-Ring - Exhaust Flue	FABL103	1
041	Thermistor - Air	EZW101	1
048	Wiring Through Way	EGLA026	1
071	Screw - Front Cover with washer MAX12 S410		
074	Screw - Pre-Coated Machined MAX12 S410		
075	Screw - Long Mounting Machine MAX12 S430		
076	Screw - Remote Terminal MAX10 S430		

Combustion unit and gas route EZ111DV (GQ-C3260WX-FF US)
EZ98DV (GQ-C2860WX-FF US)
UT199DV (GQ-C3260WX-FF PB US)



Combustion unit and gas route EZ111DV (GQ-C3260WX-FF US)
EZ98DV (GQ-C2860WX-FF US)
UT199DV (GQ-C3260WX-FF PB US)

Part Nos	Part Names	Order Nos	Q'ty/unit
101	Venturi 199kbtuh - LP (SET)	SKJ72N2	1<LP>
	Venturi 199kbtuh - NG (SET)	SKJ72N3	1<NG>
103	Mounting Plate - Gas Valve	FDAA101	1
104	Mounting Plate - Chamber	FAB0031	2
105	Burner Chamber (SET)	SKJ72N4	1
106	Mounting Plate - Flame Lifting Detection	FDA0314	1
107	Flame Lifting Detection w/ Gasket	SKJ720D	1
108	Inlet Gas Connection w/ Screw (SET)	SKJ71UX	1
109	Gas Valve (SET)	SKJ71W8	1
110	Cover - Offset Adjustment	FAB0311	1
111	Gas Valve Outlet Connector (SET)	SKJ72MR	1
112	Gas Valve Inlet Connector (SET)	SKJ71VX	1
113	Gas Pipe (SET)	SKJ72N5	1
114	Fan Motor w/ Housing	SKJ72N5	1
115	Cover - Gas Valve Connector	FAB0322	1
116	Gasket - Flame Lifting Detection	FDAL020	1
117	O-Ring - P20	2192004	2
118	O-Ring - P16B	6340407	3
119	O-Ring - P18	2110903	3
120	Gasket - Burner	FDAL002	2
121	Gasket - Chamber Inlet	FDAL004	1
122	O-Ring - Venturi - 60	FABL017	1
123	Non-return valve (SET)	SKJ72Y1	1
124	Non-return valve cap	FDA0342	1
125	O-Ring - Non-return valve	FDAL005	1
172	Screw - Long Mounting Machine with Spring Washer MAX12 S430		
173	Screw - Long Machine MAX12 S410		
174	Screw - Medium Machine 4X10 S410		
176	Screw - Mounting Machine MSX12 S430		
177	Screw - Long Mounting Machine MSX25 S430 Scoat		
178	Screw - Medium Machine MAX10 S410 for Aluminum		
179	Screw - Short Machine MX3S S410 for Aluminum		
180	Screw - Truss Head Self Drilling Tapping MAX18 S410		
181	Screw - Inlet and Manifold Gas MAX8		

Part number 601 includes 1 each of part numbers 037, 465 and 4 of part number 074.

The diagram shows the following components and their assembly sequence:

- 601**: The main upper assembly, which includes parts 037, 465, and 074.
- 607**: A base plate with a grid of holes.
- 571**: Two screws used to secure the base plate.
- 602**: A small black circular component.
- 603**: A small white rectangular component.
- 572**: A vertical support structure with multiple horizontal slots.
- 616**: A small white rectangular component.
- 612**: A curved white component.
- 611**: A small white rectangular component.
- 468**: A small white rectangular component.
- 616**: A small white rectangular component.
- 606**: A small white rectangular component.
- 173**: A small white rectangular component.

[illegible]

The diagram illustrates the electronic control unit. On the left, a tree-like structure shows the unit's connections, with labels 481, 703, and 702. A label 'WX FDA' is visible at the bottom. On the right, a detailed view of the unit shows its internal components, including a main body (700), a control panel (704), and various connectors (481, 731, 572, 702). The unit is shown in a perspective view, highlighting its modular design.

Included Accessories

801

802

803

804

x7

<Special part>	
Special part	Special part no.
Owner's guide	888
Installation manual	889

※ To request a French version of the Owner's guide or Installation manual, Reach out to our customer care. Contact details are available on the rating plate of the appliance.

Quick-Connect Cord QC-2

part	part no.
Installation manual	964

It is required for replacing one of two models that are connected by Quick-Connect using QC-1 with this model.
(It is used for connecting QC-1, which has been constructed, with this model.)

Diagram illustrating the 0-ring Kit configuration. The kit consists of two rows of nodes, each enclosed in a dashed box. The top row contains 14 nodes, and the bottom row contains 6 nodes. Each node is represented by a circle with a number inside. Connections between nodes are indicated by lines with labels such as x_{10} , x_5 , or x_3 .

Top Row Nodes and Connections:

- Node 074 is connected to Node 075 by a line labeled x_{10} .
- Node 075 is connected to Node 175 by a line labeled x_5 .
- Node 175 is connected to Node 176 by a line labeled x_{10} .
- Node 176 is connected to Node 177 by a line labeled x_5 .
- Node 177 is connected to Node 178 by a line labeled x_5 .
- Node 178 is connected to Node 179 by a line labeled x_5 .
- Node 179 is connected to Node 180 by a line labeled x_3 .
- Node 180 is connected to Node 486 by a line labeled x_5 .
- Node 486 is connected to Node 490 by a line labeled x_5 .
- Node 490 is connected to Node 571 by a line labeled x_5 .
- Node 571 is connected to Node 572 by a line labeled x_5 .
- Node 572 is connected to Node 989 by a line labeled x_{10} .
- Node 989 is connected to Node 990 by a line labeled x_3 .

Bottom Row Nodes and Connections:

- Node 123 is connected to Node 452 by a line labeled x_3 .
- Node 452 is connected to Node 454 by a line labeled x_5 .
- Node 454 is connected to Node 457 by a line labeled x_3 .
- Node 457 is connected to Node 987 by a line labeled x_3 .
- Node 987 is connected to Node 988 by a line labeled x_3 .

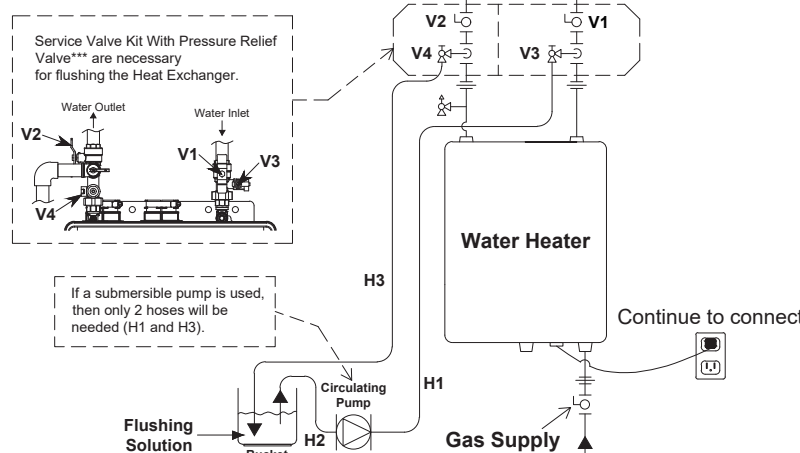
Part Nos	Part Names	Order Nos	Q'ty/unit
700	Circuit Board	SKJ7290	1
702	Power Supply Cord	ERJL001	1
703	Wiring Harness - G0-C3260WX-FF US	SKJ72N6	1
704	Wire Clamp - Nylon #4	7287909	1
731	Screw - Remote Terminal Cover M4X12 S410		
750	Remote Controller - RC-7651M-A US (SET)	SHG71H8	1<EZ Series>
	Remote Controller - RC-7651M-A NB (SET)	SHG71L6	1<UT Series>
751	Cover - Remote	QHIA013	1
752	Mounting Gasket - Remote	QHIA115	1
760	Screw Package - Remote(SET)	QQUA100	1
761	Screw - Round Head Wood M4.1X25 S305		
762	Dry Wall Anchors#K25		
800	Box - G0-C3260WX-FF US	SKJ72M0	1<EZ Series>
	Box - G0-C3260WX-FF PB US	SKJ72Z7	1<UT Series>
801	Remote Cord - 6ft	ETNM001	1
802	Wall Mounting Plate	FRA4103	1
803	Wood Screw Set7	SAD2028	1
804	Screw - Round Head Wood 4.8X38 S305		
888	Owner's Guide - G0-C3260WX-FF US	SB88163	1<EZ Series>
	Owner's Guide - G0-C3260WX-FF PB US	SB88190	1<UT Series>
889	Installation Manual - G0-C3260WX-FF US	SB88164	1<EZ Series>
	Installation Manual - G0-C3260WX-FF PB US	SB8819F	1<UT Series>
961	Quick Connect Cord - 00-2	0706377	1
962	Adaptor - 00-1 to 00-2	SA64672	1
963	Wire Clamp - Nylon #3	7223901	2
964	Installation Manual - 00-2	SA08092	1
981	Screw Kit	SKJ72N0	1
982	O-Ring Kit	SKJ72N1	1
987	O-Ring - High Temp P22	7573308	3
988	O-Ring - High Temp P12.5	3359606	3
989	Screw - Short Mounting Machine with Spring Washer M3X8 S430		
990	Screw - Round Head Short Tapping M5X8 S410		

This procedure is only intended for use by a qualified service professional or authorized Service Representative. Any unauthorized use of this procedure may result in voiding the warranty. Reach out to our customer care for additional support. Contact details are available on the rating plate of the appliance.

** Connect the blue connector marked "FLUSH" for flushing near the Circuit Board when flushing the Heat Exchanger.


«Procedure 1. The preparation of the flushing system»

-
- Service Valve Kit With Pressure Relief Valve*** are necessary for flushing the Heat Exchanger.
- Water Outlet
- Water Inlet
- V2
- V1
- V3
- V4
- If a submersible pump is used, then only 2 hoses will be needed (H1 and H3).
- H3
- Water Heater
- Continue to connect
- H1
- Flushing Solution
- Circulating Pump
- H2
- Gas Supply



«Procedure 2. Flushing the Heat Exchanger - For Single Unit»

-
- *** The connector color is blue and labeled "FLUSH".

- 
- Please check whether the reverse connection of the hose (H1) and (H3) if the display number will not change.
 In that case, the flow rate of the flushing solution may be under 1.5 gallons per minute.

- ### «Procedure 3. Cleaning the Heat Exchanger»

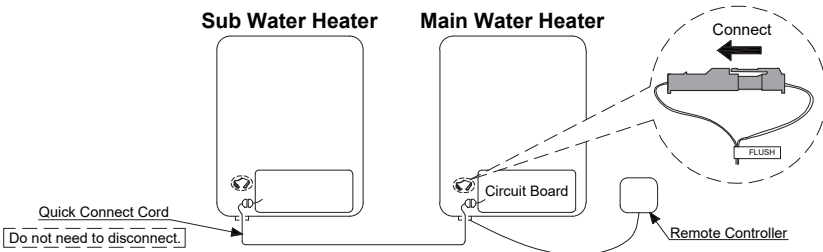
1. Remove both drain hoses (H2 and H3) from the bucket

- Water Drain Plug**

NOTE : The unit has the "Water Drain Plug" from the bottom of the water heater. Place a bucket under the water heater to drain water from the "Water Drain Plug". Carefully unscrew the "Water Drain Plug" to rinse flushing solution out of the water heater for about 10 seconds. Then close the "Water Drain Plug".

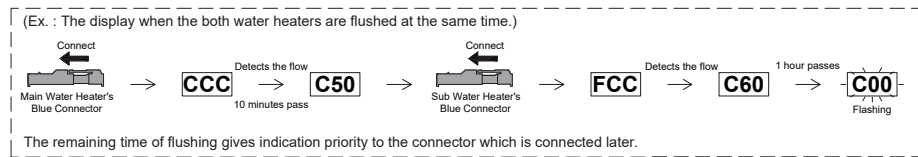
4. Close the drain valve (V4) and then remove the drain hose (H3) from the drain valve (V4).
5. Remove the drain hose (H1) from the drain valve (V3).
6. Disconnect the blue connector marked "FLUSH" for flushing.
The code "C00" goes out on the Remote Controller.
7. Close the Front Cover.
8. Open the gas supply valve and water outlet valve (V2).
9. Check for correct operation of the water heater.

1. Connect the blue connector marked "FLUSH" for unit needing to be flushed.
(The water heater is isolated from Quick Connect Multi System when the blue connector marked "FLUSH" for flushing is connected. Not need to disconnect the Quick Connect Cord.)



- CCC** is displayed when the Main Water Heater's blue connector is connected.
- FCC** is displayed when the Sub Water Heater's blue connector is connected.

4. When 1 hour passes, the code "C00" is flashing on the Remote Controller. Do not disconnect the blue connector marked "FLUSH" for flushing.



-

- Refer to appliance's installation manual or reach out to our customer care, if more information is needed for flushing. Contact details are available on the rating plate of the appliance.